

Peartree Hill Solar Farm

Environmental Statement

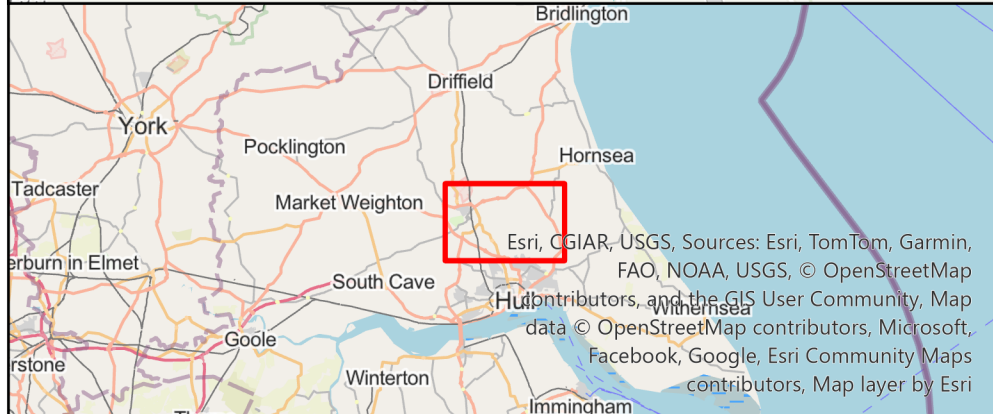
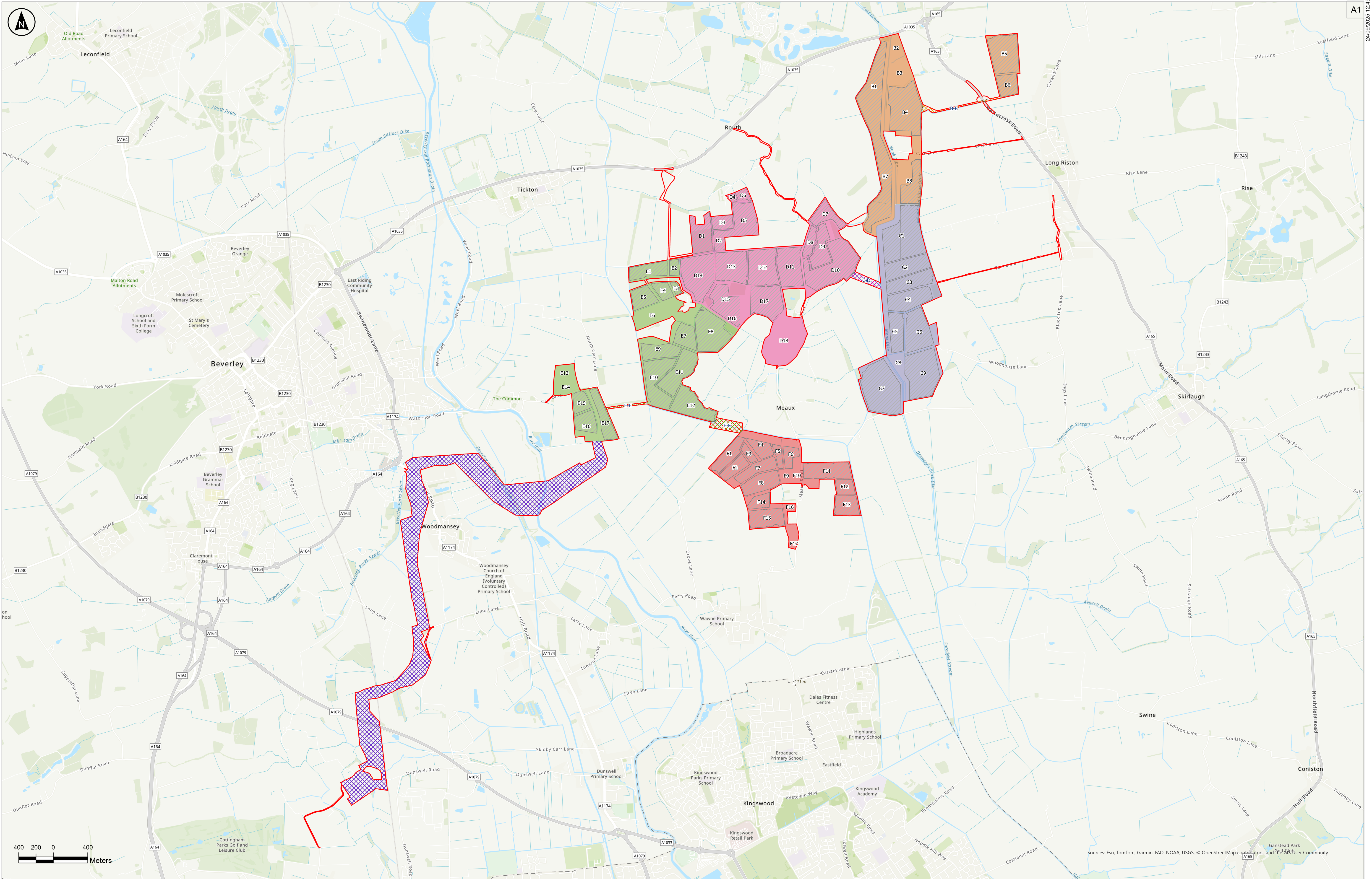
Volume 3

Figure 1.2: Land Areas and Cable Routes Plan with Field Numbering System

Revision 3

Application Document Ref: EN010157/APP/6.3
November 2025

Planning Act 2008
Infrastructure Planning
(Applications: Prescribed Forms
and Procedure) Regulations 2009 –
Regulation 5(2)(a)



Key

- Order Limits
- Solar PV Development
- B1 Field Number
- Grid Connection Cable Route

Interconnecting Cable Routes

- B-B
- C-D
- E-E
- E-F

Land Areas

- B
- C
- D
- E
- F

Notes:

P03	24/09/2025	FA	MM	BT	BT
Rev	Date	By	Chkd	Appd	Authd

Client

RWE

Designer

RSK

Project Name
Peartree Hill Solar Farm

Drawing Title
Environmental Statement,
Figure 1.2: Land Areas and
Cable Routes Plan with
Field Numbering System

Scale at A1
1:20,000
Status
DCO Application

PINS Number
EN010157/APP/6.3

Rev
P03

Coordinate System:
British National Grid

SHEET 1 OF 1

RWE Renewables UK Limited

Windmill Hill Business Park,
Whitehill Way,
Swindon,
Wiltshire,
England,
SN5 6PB
www.rwe.com